



# INSTRUCTION BULLETIN

No. 9013132  
Machine: T17  
Published: 11-2015  
Rev. 00

**NOTE: DO NOT DISCARD the Parts List from the Instruction Bulletin. Place the Parts List in the appropriate place in the machine manual for future reference. Retaining the Parts List will make it easier to reorder individual parts and will save the cost of ordering an entire kit.**

*NOTE: Numbers in parenthesis ( ) are reference numbers for parts listed in Bill of Materials.*

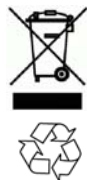
Installation instructions for **kit number 9020269**

## SYNOPSIS:

This kit contains the parts needed to replace drive motor on T17 scrubbers.  
Please follow step-by-step instructions.

## SPECIAL TOOLS / CONSIDERATIONS: NONE

(Estimated time to complete: 2 hours)



### PROTECT THE ENVIRONMENT

Please dispose of packaging materials, used machine components such as batteries and fluids in an environmentally safe way according to local waste disposal regulations.

Always remember to recycle.

## PREPARATION:

1. Empty the recovery tank and the solution tank before jacking up the machine.
2. Park the machine on a clean level surface, turn off the machine, set the parking brake, and remove the key.

**FOR SAFETY: Before leaving or servicing machine, stop on level surface, turn off machine, set parking brake, and remove key.**

3. Disconnect the battery cable from the machine.



**WARNING: Always disconnect battery cables from machine before working on electrical components.**

4. Chock both rear tires.

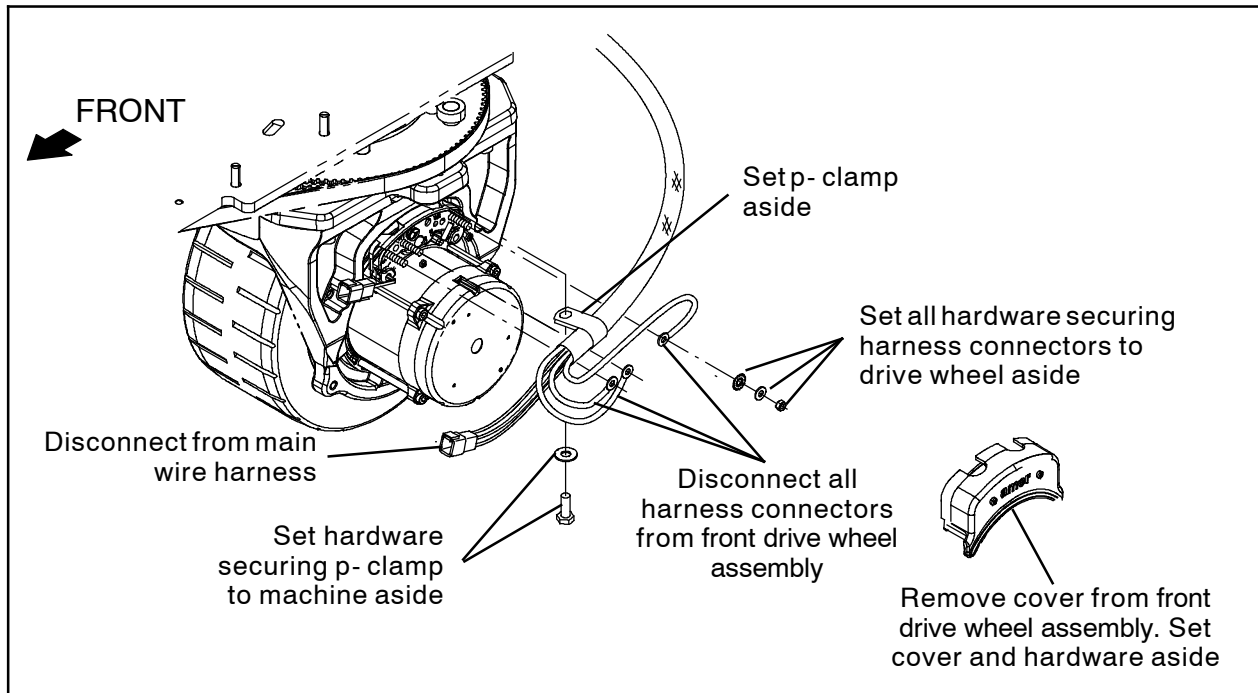
5. Jack up the front end of the machine high enough to access the front drive motor and remove the drive motor from under the machine. Place jack stands under the machine frame and lower the machine onto the jack stands. (Fig. 1)



FIG. 1

**FOR SAFETY: When servicing machine, block machine tires before jacking machine up. Use a hoist or jack that will support the weight of the machine. Jack machine up at designated locations only. Support machine with jack stands.**

**INSTALLATION:**



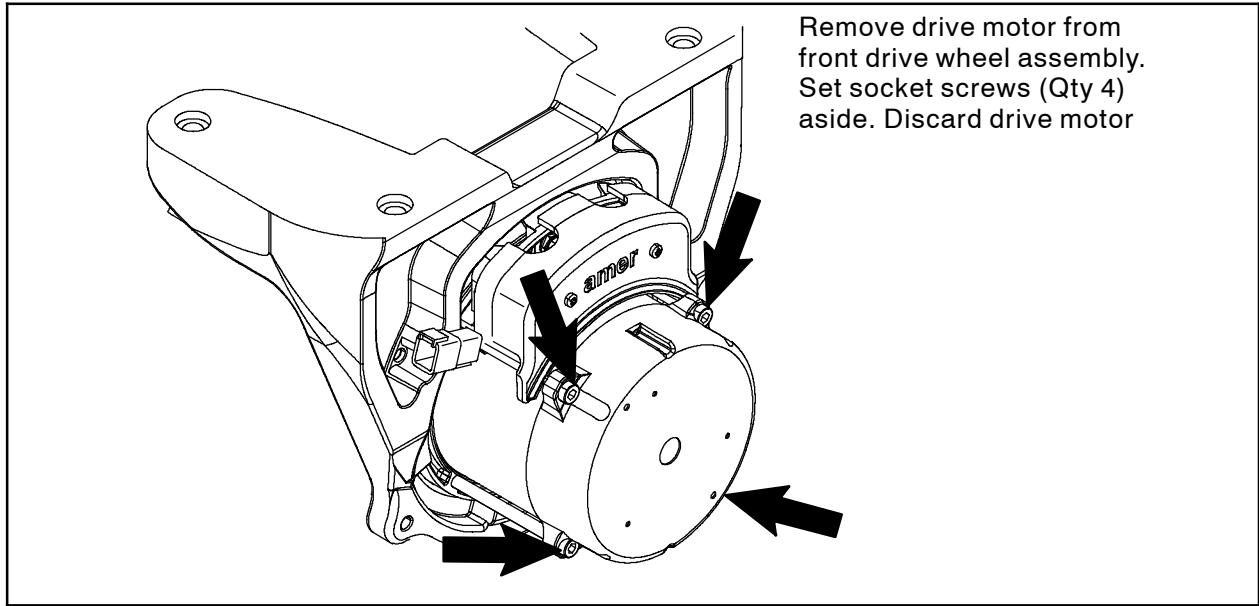
**FIG. 2**

1. Remove the cover from the front drive wheel assembly. Set the cover and mounting hardware aside. (Fig. 2)
2. Remove the p-clamp securing the main wire harness to the front drive wheel assembly. Set the p-clamp and hardware aside. (Fig. 2 / Fig. 3)



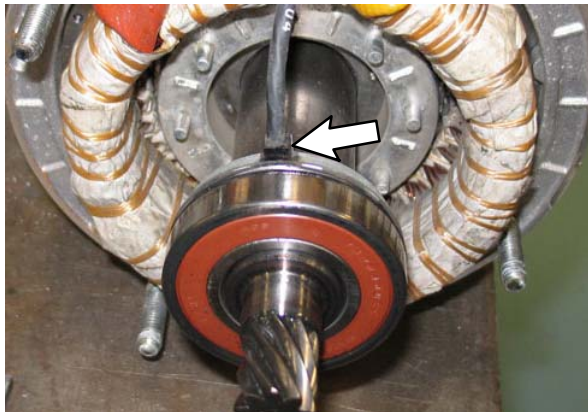
**FIG. 3**

3. Disconnect all harness connectors from the front drive wheel assembly. (Fig. 2 / Fig. 3)

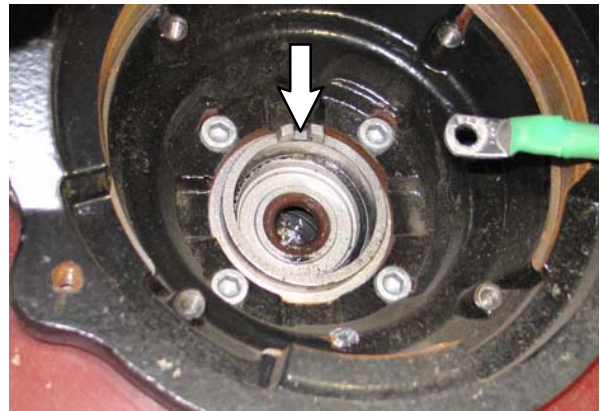


**FIG. 4**

4. Remove the drive motor from the front drive wheel assembly. Set the socket screws (Qty. 4) aside. Discard the removed drive motor. (Fig. 4)
5. Insert the new drive motor (1) into the front drive wheel assembly. Be sure the drive motor encoder wire is seated in the channel located inside the drive motor hub and do not pinch any wires between the drive motor and the front drive wheel assembly. (Fig. 5 / Fig. 6)



**FIG. 5**



**FIG. 6**

6. Apply Blue Loctite® 243 onto the four socket screws. (Fig. 4)
7. Torque the socket screws to 22 Nm / 16.23 ft. lbs. (Fig. 4)

8. Connect all wire harness connectors to the front drive wheel assembly. Arrange wire harness as shown. (Fig. 7 / Fig. 8)



FIG. 7



FIG. 8

9. Reinstall the p- clamp to secure the wire harness to the front drive wheel assembly. (Fig. 2)
10. Reinstall the cover onto the front drive wheel assembly. (Fig. 2)
11. Slightly raise machine from jack stands, remove the jack stands from under the machine, and lower the machine to the floor.
12. Reconnect the battery cable to the machine.
13. Start and test machine. Operate the machine in both forward and reverse to ensure the new drive motor functions.

---

**Bill Of Materials For Motor Replmt Kit, Drive [T17] - 9020269**

Ref.	Tennant Part No.	Description	Qty.
1	9013131	VR, Motor, Drive [Amer Replmt]	1

TENNANT COMPANY  
P. O. Box 1452  
Minneapolis, MN 55440-1452